

Projections of households, population and labour supply

Introduction

- 1.1.1 The object of the projections is to provide figures on the likely household numbers, population and labour force in each of the local authority areas within the Stansted area of interest. For districts in the East of England projections are controlled to the dwelling provision figures as set out in the Secretary of State's 'Proposed Changes' to the Draft Regional Plan 2001 to 2021.¹ Beyond 2021 dwelling provision in each district is assumed to continue at the same planned annual average rate for the period 2006 to 2021 as is set out in the 'Proposed Changes'.
- 1.1.2 The projections start from 2001 and produce figures at 5 year intervals. The starting point for the projections is the mid-year estimate population for 2001 for each area, subdivided by sex and 5-year age group. Results for intermediate years for all areas are obtained by linear interpolation.
- 1.1.3 The definition of the area studied has been described elsewhere.²

Overview of the projection process

- 1.1.4 The projection process for a single area (ie. local authority district/borough) and 5-year period is illustrated in diagrammatic form in Figure 1.
- 1.1.5 The population resulting from the natural change of the starting population is first obtained, and then those remaining after allowing for out-migration. These remaining people are converted to the equivalent number of remaining households.
- 1.1.6 The increase in the dwelling stock in the 5-year period in each area is obtained from the figures in the Secretary of State's 'Proposed Changes' to the draft Regional Plan, and hence the total number of dwellings and households at the end of the period is derived. It is the total number of dwellings that represents the control mechanism in the projection process (ie. it is a housing stock controlled projection).
- 1.1.7 The difference between the total number of households in the area and the remaining households gives the number of incoming households. From information on in-migrants and household formation, the relation between numbers of in-migrants and the corresponding number of households is known. Thus the number of migrants needed to move into the area in the period is obtained.
- 1.1.8 From this, and the size of the remaining population, the total population is obtained. This population is then converted to the corresponding labour force through application of economic activity rates.

Initial information

- 1.1.9 The projections start from the 2001 population, by age and sex, as given by the final ONS (revised) 2001 mid-year estimates that were published in September 2003.
- 1.1.10 Figures on the dwelling stock in 2001 in each area were obtained from the local authorities.
- 1.1.11 The student population in Cambridge significantly distorts the age distribution. The non-private household population in Cambridge, aged 15-34, of which almost all was the student body, was therefore removed from the 2001 initial population. The University did not have an official forecast of the future growth in student numbers, but agreed that it would be reasonable for these purposes to assume growth would continue at the same rate as in the recent past. These projected numbers were then added back into the projected population at each date, at the end of the projection process.

Natural change projections and migration characteristics

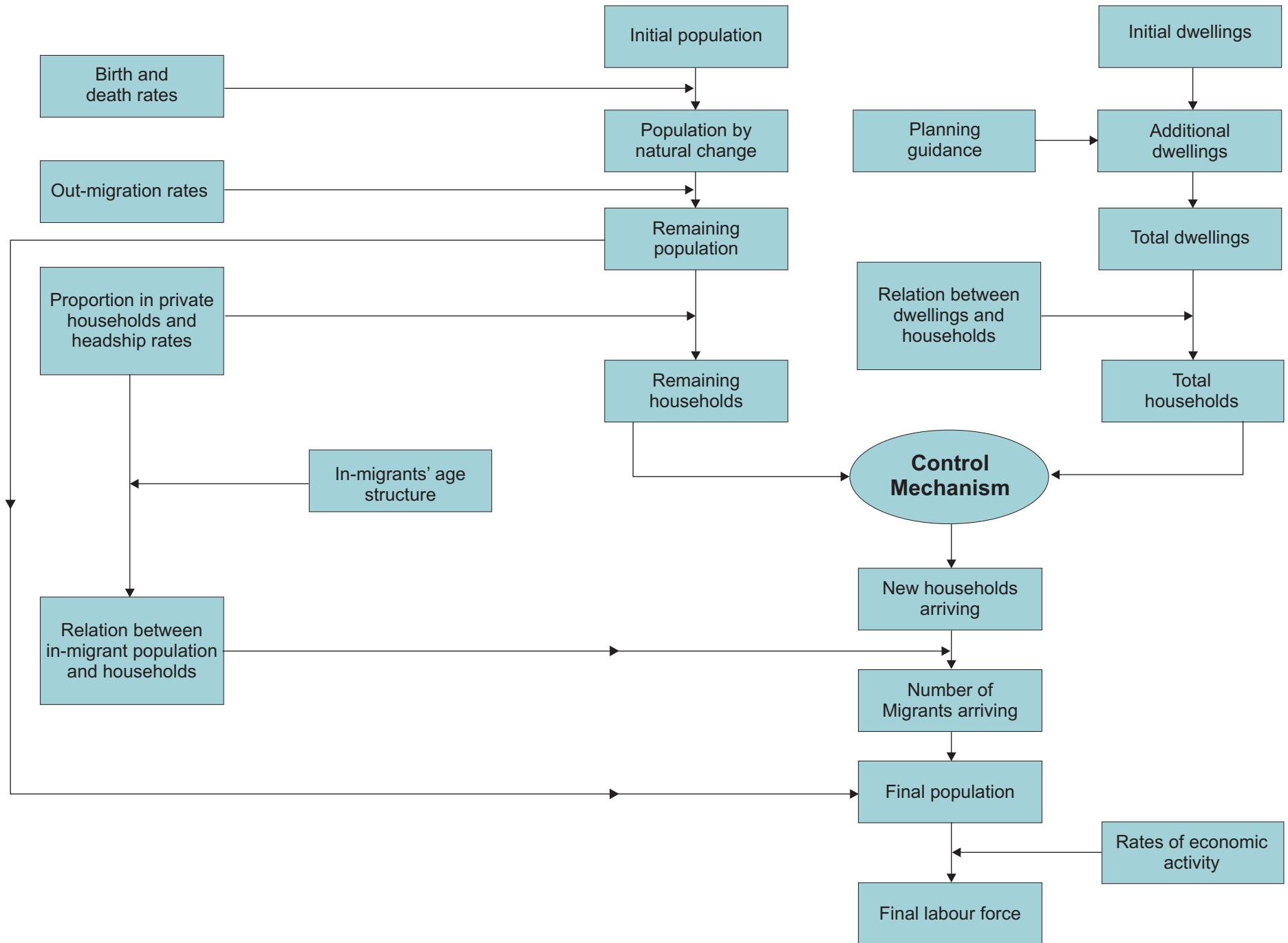
- 1.1.12 The projections are based on the Government Actuary's forecasts of the future course of fertility and mortality rates as used in the 2004-base national projections. Five year survivorship factors, by age and sex, for use in the projections, are calculated from the mortality rates as given for the mid-point of each projection quinquennium.

1 The Secretary of State's Proposed Changes to the Draft Revision to the Regional Spatial Strategy for the East of England and Statement of Reasons, December 2006.

2 Please refer to the Environmental Statement, Volume 8 - Employment, Section 6.2.

- 1.1.13 Local differentials are incorporated for each area, obtained by comparing births and deaths in each area in the period 2000-2002 as predicted by national fertility and mortality rates with those actually occurring. These differentials are held constant over the whole projection period.
- 1.1.14 The 2001 Census gives migrants within, into and out of each area in the year before the Census, by age and sex. From this, 5-year out-migration rates have been calculated, by age and sex, in relation to age at the end of the 5-year period. The age/sex distributions of in-migrants to each area in a 5-year period have also been calculated. Both the out-migration rates and the immigrant structures are held constant over the projection period.

Figure 1
Projection Process for 1 Area and 1 Quinquennium



- 1.1.15 For Cambridge, for those of student age the approach had to be modified, because the Census records migrants as 'private' or 'non-private' by their place of residence at Census date. The projection process requires, in the case of Cambridge, at ages 15-34, only migrants into and out of private households. The Census identifies the in-migrants to private households correctly, but 'private' out-migrants include all those leaving university accommodation and moving to private households elsewhere. A structure was deduced for private out-migrants at 15-34, such that the resulting age distribution of the projected population was reasonable.

Household formation in the Eastern Region

- 1.1.16 The 2001 Census provides information on those in non-private households in each area by age and sex, and the proportion of those in private households by age and sex is kept constant over the projection period.
- 1.1.17 In 2006 the Department of Communities and Local Government (DCLG) produced new household projections, from a 2003 base. Corresponding household representative rates (headship rates for short) for the districts of interest to the Stansted study were obtained from the DCLG. The actual work of preparing the projections had been carried out by the Population and Housing Research Group (PHRG) at Anglia Ruskin University.
- 1.1.18 The rates were supplied in the form required - by age and sex, but not marital status. Marital status is used by PHRG in their analysis but it is not a variable used in the Stansted projections.
- 1.1.19 The rates supplied were estimates for 2001 and then projections at 5 year intervals from 2006 to 2026. The rates then had to be extended to 2031 for the G2 projections. While it would have been possible to keep them constant at 2026 values for 2031, it seemed preferable to include further change since the rates have changed significantly 2001-2026. For each age/sex group in each area, the change in rate 2026-31 has been taken as the average of that given by the projected changes in rate in 2021-2026 and half that in 2011-2021. This weights the change 2026-31 in favour of the most recent experience, but still takes some account of the experience over the longer period.
- 1.1.20 It has been necessary to incorporate scaling factors to ensure that the total households given by these rates for 2001 for each district accord with the figures we have deduced from local authority data on dwelling stock for mid-2001, coupled with 2001 Census ratios of households to dwellings,.
- 1.1.21 The proportions in private households, and the headship rates by age and sex, are used in the projections both to convert the remaining population to remaining households, and to convert in-migrants to the equivalent number of in-migrant households.

Dwelling increases

- 1.1.22 The Secretary of State's 'Proposed Changes' version of the Draft Plan specifies the minimum dwelling increase by district for the Eastern Region, over the period 2001-2021 (Policy H1).
- 1.1.23 Under the Regional Housing Provision figures set out under Policy H1 in the Proposed Changes, the Secretary of State includes data on completions April 2001 to March 2006 and these have been incorporated in the current projections. Over the remaining Plan-period (2006-2021) the district average annual rates of development are set out as minimum targets for local planning authorities to achieve or exceed where more housing can be delivered without breaching environmental limits and infrastructure constraints.
- 1.1.24 In the absence of explicit guidance on what, if any, additional development can be delivered over the period 2006-21 Entec has been advised by EERA to use the provision figures in the 'Proposed Changes' version of the Regional Plan for projection purposes. Similarly, in the absence of explicit guidance on what assumptions should be made for the period beyond 2021, the current projections assume in each area a continuation of the development rate for 2006-2021. Figures have therefore been obtained on the dwelling increases for each area, by quinquennium, to include in the projections. These assumptions are set out in Table 1.

Table 1: Assumptions on dwelling increases by Quinquennium (East of England)

| | 2001-6 | 2006-11 | 2011-16 | 2016-21 | 2021-26 | 2026-31 |
|--------------------|--------|---------|---------|---------|---------|---------|
| Uttlesford | 1,620 | 2,127 | 2,127 | 2,127 | 2,127 | 2,127 |
| East Hertfordshire | 2,140 | 3,287 | 3,287 | 3,287 | 3,287 | 3,287 |
| Braintree | 3,360 | 1,447 | 1,447 | 1,447 | 1,447 | 1,447 |

| | 2001-6 | 2006-11 | 2011-16 | 2016-21 | 2021-26 | 2026-31 |
|-------------------|--------|---------|---------|---------|---------|---------|
| Harlow | 810 | 5,063 | 5,063 | 5,063 | 5,063 | 5,063 |
| Chelmsford | 3,580 | 4,140 | 4,140 | 4,140 | 4,140 | 4,140 |
| Colchester | 4,630 | 4,157 | 4,157 | 4,157 | 4,157 | 4,157 |
| Epping Forest | 1,220 | 760 | 760 | 760 | 760 | 760 |
| Cambridge | 2,300 | 5,567 | 5,567 | 5,567 | 5,567 | 5,567 |
| S. Cambridgeshire | 3,520 | 6,660 | 6,660 | 6,660 | 6,660 | 6,660 |
| St Edmundsbury | 1,980 | 2,673 | 2,673 | 2,673 | 2,673 | 2,673 |

- 1.1.25 The increases in dwellings by district in Table 1 are then converted to increases in the number of households, as required by the projections, using the household/dwelling ratios for each area from the 2001 Census. These ratios mainly represent vacancy rates, and also include the effects of sharing and second homes.

Conversion of population projections to labour force

- 1.1.26 In January 2006 the Office of National Statistics (ONS) issued new projections of the UK Labour Force, based on the 2004-based population projections. The data on economic activity rates included in the ONS papers have been included in these Stansted projections. The ONS projections of activity rates are purely mechanistic, based on regression analysis of past trends. They take no account of the changing economic climate, either in the past, or in the future.
- 1.1.27 The more detailed ONS paper includes tables of activity rates, by sex and 5-year age group from age 25. Below 25, manipulation was required to obtain the rates required for those 15-19 and 20-24.
- 1.1.28 The ONS projected activity rates are only carried forward to 2020, and the Stansted projections require rates to 2031. Two alternative approaches to carrying forward the projected rates to 2031 were therefore explored. In the first the rates beyond 2020 were held constant at their 2020 values. In the second alternative assumption it was assumed that rates will continue to change at the same rate as currently expected for the period 2011-2020. The results in this appendix assume that activity rates beyond 2020 are held constant at their 2020 values (Table 2).
- 1.1.29 The projections of labour force in each area start from the activity rates recorded by the Census. Future rates are calculated using a single national set of ratios of the age and sex-specific rates at each date to the rate in 2001.

Table 2: Assumptions on ratios of activity rates to those in 2001*

| | 2006 | 2011 | 2016 | 2021 | 2026 | 2031 |
|-----------------|-------|-------|-------|-------|-------|-------|
| Male Age | | | | | | |
| 15-19 | 0.916 | 0.859 | 0.811 | 0.753 | 0.753 | 0.753 |
| 20-24 | 1.000 | 0.999 | 1.000 | 0.997 | 0.997 | 0.997 |
| 25-29 | 0.990 | 0.986 | 0.981 | 0.977 | 0.977 | 0.977 |
| 30-34 | 0.988 | 0.984 | 0.980 | 0.977 | 0.977 | 0.977 |
| 35-39 | 0.995 | 0.990 | 0.988 | 0.983 | 0.983 | 0.983 |
| 40-44 | 0.995 | 0.989 | 0.985 | 0.982 | 0.982 | 0.982 |
| 45-49 | 1.003 | 1.001 | 0.999 | 0.997 | 0.997 | 0.997 |
| 50-54 | 1.008 | 1.014 | 1.020 | 1.024 | 1.024 | 1.024 |
| 55-59 | 1.024 | 1.042 | 1.057 | 1.062 | 1.062 | 1.062 |
| 60-64 | 1.078 | 1.125 | 1.162 | 1.187 | 1.187 | 1.187 |
| 65-69 | 1.255 | 1.340 | 1.433 | 1.504 | 1.504 | 1.504 |
| 70-74 | 1.108 | 1.081 | 1.027 | 1.000 | 1.000 | 1.000 |

| | | | | | | |
|---------------------------|-------|-------|-------|-------|-------|-------|
| | | | | | | |
| Female Age | | | | | | |
| 15-19 | 0.945 | 0.900 | 0.860 | 0.812 | 0.812 | 0.812 |
| 20-24 | 1.008 | 1.023 | 1.033 | 1.039 | 1.039 | 1.039 |
| 25-29 | 1.013 | 1.028 | 1.038 | 1.046 | 1.046 | 1.046 |
| 30-34 | 1.011 | 1.026 | 1.038 | 1.046 | 1.046 | 1.046 |
| 35-39 | 0.991 | 1.000 | 1.004 | 1.008 | 1.008 | 1.008 |
| 40-44 | 1.001 | 1.005 | 1.009 | 1.010 | 1.010 | 1.010 |
| 45-49 | 1.009 | 1.015 | 1.020 | 1.024 | 1.024 | 1.024 |
| 50-54 | 1.040 | 1.071 | 1.104 | 1.130 | 1.130 | 1.130 |
| 55-59 | 1.100 | 1.150 | 1.204 | 1.249 | 1.249 | 1.249 |
| 60-64 | 1.083 | 1.195 | 1.419 | 1.592 | 1.592 | 1.592 |
| 65-69 | 1.347 | 1.480 | 1.613 | 1.720 | 1.720 | 1.720 |
| 70-74 | 1.067 | 1.067 | 1.067 | 1.067 | 1.067 | 1.067 |
| * Change relative to 2001 | | | | | | |

- 1.1.30 The projections do not include any allowance for those working aged over 74, since the Census did not include such workers.

Projection results

- 1.1.31 The results of the projections, by district are set out at the back of this Appendix. Figures are given for population, and workforce. The results for population and workforce are summarised in Tables 3 and 4.

| Table 3: Total population (000s) | | | | | | | | | | | | | | | | |
|---|----------------------------------|----------------------|----------------------|---------------|----------------------|---------------|---------------|----------------------|----------------------|---------------|----------------------|---------------|---------------|----------------------|----------------------|---------------|
| | <i>Interpolations in italics</i> | | | | | | | | | | | | | | | |
| | 2001 | 2003 | 2004 | 2006 | 2010 | 2011 | 2012 | 2014 | 2015 | 2016 | 2020 | 2021 | 2026 | 2027 | 2030 | 2031 |
| Inner area | 409.4 | <i>413.0</i> | <i>414.8</i> | 418.4 | <i>432.1</i> | 435.5 | 438.9 | <i>445.6</i> | <i>449.0</i> | 452.4 | <i>466.7</i> | 470.2 | 491.8 | <i>496.5</i> | <i>510.4</i> | 515.0 |
| Outer area | 773.0 | <i>780.6</i> | <i>784.3</i> | 791.9 | <i>819.7</i> | 826.7 | 833.7 | <i>847.9</i> | <i>854.9</i> | 862.0 | <i>891.0</i> | 898.2 | 941.2 | <i>950.2</i> | <i>976.9</i> | 985.9 |
| Assessment area | 1182.4 | <i>1193.5</i> | <i>1199.1</i> | 1210.3 | <i>1251.8</i> | 1262.2 | 1272.6 | <i>1293.5</i> | <i>1304.0</i> | 1314.4 | <i>1357.6</i> | 1368.4 | 1433.0 | <i>1446.6</i> | <i>1487.3</i> | 1500.9 |

| Table 4: Total workforce, (000s) | | | | | | | | | | | | | | | | |
|---|----------------------------------|---------------------|---------------------|--------------|---------------------|--------------|--------------|---------------------|---------------------|--------------|---------------------|--------------|--------------|---------------------|---------------------|--------------|
| | <i>Interpolations in italics</i> | | | | | | | | | | | | | | | |
| | 2001 | 2003 | 2004 | 2006 | 2010 | 2011 | 2012 | 2014 | 2015 | 2016 | 2020 | 2021 | 2026 | 2027 | 2030 | 2031 |
| Inner area | 214.8 | <i>217.4</i> | <i>218.7</i> | 221.4 | <i>230.0</i> | 232.1 | 233.9 | <i>237.6</i> | <i>239.5</i> | 241.3 | <i>248.4</i> | 250.2 | 259.4 | <i>262.4</i> | <i>271.5</i> | 274.6 |
| Outer area | 397.2 | <i>403.3</i> | <i>406.4</i> | 412.6 | <i>429.2</i> | 433.3 | 437.1 | <i>444.6</i> | <i>448.4</i> | 452.2 | <i>467.2</i> | 470.9 | 491.1 | <i>497.1</i> | <i>515.1</i> | 521.1 |
| Assessment area | 612.0 | <i>620.8</i> | <i>625.2</i> | 634.0 | <i>659.1</i> | 665.4 | 671.0 | <i>682.2</i> | <i>687.8</i> | 693.5 | <i>715.6</i> | 721.1 | 750.5 | <i>759.5</i> | <i>786.6</i> | 795.6 |

Sensitivity test results

- 1.1.32 Having had regard to the Secretary of State's recommendations on housing provision figures in the Proposed Changes version of the East of England Plan, comments received from stakeholders consultation on the projection methodology, plus discussions with EERA and EEDA, two sensitivities have been run under which the housing provision figures in our projections are adjusted as follows:
- Plus 10% for the period 2016-2031; and,
 - Plus 10% for the period 2021-2031.
- 1.1.33 In the absence of a strategic steer from stakeholders, it is considered that the 10% increase appropriate for the following reasons:
- The 2004-based household projections translate into a housing demand over 2001-2021 of approximately 40,000 dwellings (or 8%) more than what is currently being planned for under the Proposed Changes.
 - In the Proposed Changes the Secretary of State has called for an early review of the RSS to test the scope for higher growth during the period 2011 to 2021 and, subject to environmental limits and infrastructure constraints, has also called on Local Planning Authorities to exceed the annual average rates for 2006-2021.
 - In the Housing Green Paper³, the Government has set a new housing target for delivering 2 million new homes by 2016 and 3 million by 2020. The Government has also emphasised that regional housing figures need to be more flexible in order to meet growing demand and address affordability issues.
 - The Government's latest 2006-based population projections suggest a total population for the United Kingdom at 2016 of 1.7 million, 2.6 per cent higher than in the previous (2004-based) projection which forms part of the demographic basis of the housing provision figures in the Proposed Changes version of the Regional Plan.⁴
- 1.1.34 Summary results of the sensitivity tests are presented in Tables 3a and 4b; Full results are presented at the end of the appendix. These tables reveal that a 10% increasing in housing provision across the assessment area from 2016 (10,764 dwellings over the 15 year period) will result in:
- An increase in population of 0.64% and a 0.77% increase in labour supply by 2021; and,
 - An increase in population of 1.35% and 1.53% increase in labour supply by 2030. The labour supply increase is equal to an extra workforce in 2030 of 10,159 persons.
- 1.1.35 Tables 3b and 4b reveal that for the same 10% increase in housing (7,176 additional dwellings) across the assessment area from 2021 the scale of the increase in population and labour supply by 2030 is only 0.87% and 1.01% respectively. The labour supply increase is equal to an extra workforce in 2030 of 7,957 persons.
- 1.1.36 Due to slippage in the current timetable for formal approval of the RSS and the knock-on implications this is having on not only LDF timetables but the speed at which new developments sites are being brought forward and, ultimately therefore, housing deliverability generally, a 10% increase to dwelling provision figures for any period before 2016 has not been applied.

³ Department for Communities and Local Government, *Homes for the future: more affordable, more sustainable*, July 2007

⁴ The higher population projection figure is due to a combination of higher birthrate assumptions, higher assumed levels of net migration, and higher life expectancy assumptions.

10% extra dwellings from 2016

| Table 3a : total population (000s) | | | | | | | | | | | | | | | | |
|---|----------------------------------|---------------|---------------|---------------|---------------|---------------|---------------|---------------|---------------|---------------|---------------|---------------|---------------|---------------|---------------|---------------|
| | <i>Interpolations in italics</i> | | | | | | | | | | | | | | | |
| | 2001 | 2003 | 2004 | 2006 | 2010 | 2011 | 2012 | 2014 | 2015 | 2016 | 2020 | 2021 | 2026 | 2027 | 2030 | 2031 |
| Inner area | 409.4 | 413.0 | 414.8 | 418.4 | 432.1 | 435.5 | 438.9 | 445.6 | 449.0 | 452.4 | 468.9 | 473.1 | 497.4 | 502.6 | 518.0 | 523.2 |
| Outer area | 773.0 | 780.6 | 784.3 | 791.9 | 819.7 | 826.7 | 833.7 | 847.9 | 854.9 | 862.0 | 895.7 | 904.1 | 952.6 | 961.8 | 989.3 | 998.5 |
| Assessment area | 1182.4 | 1193.5 | 1199.1 | 1210.3 | 1251.8 | 1262.2 | 1272.6 | 1293.5 | 1304.0 | 1314.4 | 1364.6 | 1377.1 | 1450.0 | 1464.3 | 1507.4 | 1521.7 |

| Table 4a : total workforce (000s) | | | | | | | | | | | | | | | | |
|--|----------------------------------|--------------|--------------|--------------|--------------|--------------|--------------|--------------|--------------|--------------|--------------|--------------|--------------|--------------|--------------|--------------|
| | <i>Interpolations in italics</i> | | | | | | | | | | | | | | | |
| | 2001 | 2003 | 2004 | 2006 | 2010 | 2011 | 2012 | 2014 | 2015 | 2016 | 2020 | 2021 | 2026 | 2027 | 2030 | 2031 |
| Inner area | 214.8 | 217.4 | 218.7 | 221.4 | 230.0 | 232.1 | 233.9 | 237.6 | 239.5 | 241.3 | 249.8 | 252.0 | 262.8 | 266.1 | 276.2 | 279.5 |
| Outer area | 397.2 | 403.3 | 406.4 | 412.6 | 429.2 | 433.3 | 437.1 | 444.6 | 448.4 | 452.2 | 470.2 | 474.7 | 498.2 | 504.2 | 522.5 | 528.5 |
| Assessment area | 612.0 | 620.8 | 625.2 | 634.0 | 659.1 | 665.4 | 671.0 | 682.2 | 687.8 | 693.5 | 720.0 | 726.6 | 760.9 | 770.4 | 798.6 | 808.1 |

10% extra dwellings from 2021

| Table 3b : Total population (000s) | | | | | | | | | | | | | | | | |
|---|----------------------------------|---------------|---------------|---------------|---------------|---------------|---------------|---------------|---------------|---------------|---------------|---------------|---------------|---------------|---------------|---------------|
| | <i>Interpolations in italics</i> | | | | | | | | | | | | | | | |
| | 2001 | 2003 | 2004 | 2006 | 2010 | 2011 | 2012 | 2014 | 2015 | 2016 | 2020 | 2021 | 2026 | 2027 | 2030 | 2031 |
| Inner area | 409.4 | 413.0 | 414.8 | 418.4 | 432.1 | 435.5 | 438.9 | 445.6 | 449.0 | 452.4 | 466.7 | 470.2 | 494.6 | 499.8 | 515.3 | 520.5 |
| Outer area | 773.0 | 780.6 | 784.3 | 791.9 | 819.7 | 826.7 | 833.7 | 847.9 | 854.9 | 862.0 | 891.0 | 898.2 | 947.0 | 956.5 | 985.0 | 994.4 |
| Assessment area | 1182.4 | 1193.5 | 1199.1 | 1210.3 | 1251.8 | 1262.2 | 1272.6 | 1293.5 | 1304.0 | 1314.4 | 1357.6 | 1368.4 | 1441.7 | 1456.3 | 1500.3 | 1514.9 |

| Table 4b : Total workforce, figures in thousands | | | | | | | | | | | | | | | | |
|---|----------------------------------|--------------|--------------|--------------|--------------|--------------|--------------|--------------|--------------|--------------|--------------|--------------|--------------|--------------|--------------|--------------|
| | <i>Interpolations in italics</i> | | | | | | | | | | | | | | | |
| | 2001 | 2003 | 2004 | 2006 | 2010 | 2011 | 2012 | 2014 | 2015 | 2016 | 2020 | 2021 | 2026 | 2027 | 2030 | 2031 |
| Inner area | 214.8 | 217.4 | 218.7 | 221.4 | 230.0 | 232.1 | 233.9 | 237.6 | 239.5 | 241.3 | 248.4 | 250.2 | 261.2 | 264.5 | 274.6 | 278.0 |
| Outer area | 397.2 | 403.3 | 406.4 | 412.6 | 429.2 | 433.3 | 437.1 | 444.6 | 448.4 | 452.2 | 467.2 | 470.9 | 494.8 | 501.1 | 520.0 | 526.3 |
| Assessment area | 612.0 | 620.8 | 625.2 | 634.0 | 659.1 | 665.4 | 671.0 | 682.2 | 687.8 | 693.5 | 715.6 | 721.1 | 756.0 | 765.7 | 794.6 | 804.2 |

Baseline

| Table A1: Total population | | | | | | | | | | | | | |
|----------------------------|----------------------------------|------------------|------------------|-------------------------|-------------------------|-------------------------|-------------------------|-------------------------|------------------|------------------|-------------------------|-------------------------|------------------|
| | <i>Interpolations in italics</i> | | | | | | | | | | | | |
| | 2001 | 2006 | 2011 | 2012 | 2014 | 2015 | 2016 | 2020 | 2021 | 2026 | 2027 | 2030 | 2031 |
| Uttlesford | 68,969 | 71,445 | 74,924 | <i>75,590</i> | <i>76,922</i> | <i>77,588</i> | <i>78,254</i> | <i>81,052</i> | 81,751 | 85,717 | <i>86,700</i> | <i>89,649</i> | 90,633 |
| East Herts | 129,145 | 131,766 | 136,819 | <i>137,798</i> | <i>139,755</i> | <i>140,734</i> | <i>141,713</i> | <i>145,945</i> | 147,003 | 153,517 | <i>154,980</i> | <i>159,370</i> | 160,833 |
| Braintree | 132,482 | 136,993 | 136,640 | <i>136,592</i> | <i>136,494</i> | <i>136,446</i> | <i>136,397</i> | <i>136,481</i> | 136,502 | 137,767 | <i>138,215</i> | <i>139,560</i> | 140,009 |
| Harlow | 78,799 | 78,189 | 87,132 | <i>88,911</i> | <i>92,469</i> | <i>94,248</i> | <i>96,027</i> | <i>103,190</i> | 104,981 | 114,819 | <i>116,561</i> | <i>121,785</i> | 123,527 |
| Inner area | 409,395 | 418,393 | 435,515 | <i>438,891</i> | <i>445,641</i> | <i>449,016</i> | <i>452,392</i> | <i>466,668</i> | 470,236 | 491,820 | <i>496,456</i> | <i>510,365</i> | 515,001 |
| Chelmsford | 157,269 | 159,920 | 164,372 | <i>165,418</i> | <i>167,511</i> | <i>168,557</i> | <i>169,603</i> | <i>174,323</i> | 175,503 | 182,782 | <i>184,415</i> | <i>189,317</i> | 190,951 |
| Colchester | 156,016 | 160,503 | 163,550 | <i>164,299</i> | <i>165,798</i> | <i>166,547</i> | <i>167,297</i> | <i>170,893</i> | 171,792 | 178,658 | <i>179,953</i> | <i>183,838</i> | 185,132 |
| Epping Forest | 120,972 | 120,315 | 118,812 | <i>118,603</i> | <i>118,185</i> | <i>117,977</i> | <i>117,768</i> | <i>117,231</i> | 117,097 | 117,390 | <i>117,608</i> | <i>118,262</i> | 118,480 |
| Cambridge | 109,941 | 115,943 | 128,892 | <i>131,243</i> | <i>135,945</i> | <i>138,297</i> | <i>140,648</i> | <i>149,262</i> | 151,416 | 161,933 | <i>164,059</i> | <i>170,439</i> | 172,566 |
| South Cambs | 130,476 | 135,727 | 149,007 | <i>151,548</i> | <i>156,628</i> | <i>159,168</i> | <i>161,709</i> | <i>171,698</i> | 174,195 | 187,798 | <i>190,584</i> | <i>198,940</i> | 201,726 |
| St Edmundsbury | 98,323 | 99,478 | 102,050 | <i>102,635</i> | <i>103,806</i> | <i>104,391</i> | <i>104,976</i> | <i>107,543</i> | 108,184 | 112,666 | <i>113,537</i> | <i>116,152</i> | 117,023 |
| Outer area | 772,997 | 791,885 | 826,683 | <i>833,747</i> | <i>847,873</i> | <i>854,937</i> | <i>862,000</i> | <i>890,950</i> | 898,188 | 941,227 | <i>950,157</i> | <i>976,947</i> | 985,878 |
| Assessment area | 1,182,392 | 1,210,278 | 1,262,198 | <i>1,272,637</i> | <i>1,293,515</i> | <i>1,303,953</i> | <i>1,314,392</i> | <i>1,357,618</i> | 1,368,424 | 1,433,047 | <i>1,446,613</i> | <i>1,487,312</i> | 1,500,878 |

| Table A2: Total workforce | | | | | | | | | | | | | |
|----------------------------------|----------------|----------------------------------|----------------|----------------|----------------|----------------|----------------|----------------|----------------|----------------|----------------|----------------|----------------|
| | | <i>Interpolations in italics</i> | | | | | | | | | | | |
| | 2001 | 2006 | 2011 | <i>2012</i> | <i>2014</i> | <i>2015</i> | 2016 | <i>2020</i> | 2021 | 2026 | <i>2027</i> | <i>2030</i> | 2031 |
| Uttlesford | 35,994 | 37,655 | 39,488 | <i>39,813</i> | <i>40,464</i> | <i>40,790</i> | 41,115 | <i>42,467</i> | 42,805 | 44,508 | <i>45,155</i> | <i>47,097</i> | 47,744 |
| East Herts | 69,275 | 70,937 | 73,996 | <i>74,509</i> | <i>75,535</i> | <i>76,048</i> | 76,561 | <i>78,560</i> | 79,060 | 81,782 | <i>82,844</i> | <i>86,032</i> | 87,095 |
| Braintree | 68,603 | 71,175 | 70,403 | <i>70,269</i> | <i>70,002</i> | <i>69,868</i> | 69,734 | <i>69,327</i> | 69,225 | 68,768 | <i>69,072</i> | <i>69,986</i> | 70,290 |
| Harlow | 40,902 | 41,615 | 48,225 | <i>49,357</i> | <i>51,620</i> | <i>52,751</i> | 53,883 | <i>58,025</i> | 59,061 | 64,312 | <i>65,339</i> | <i>68,422</i> | 69,450 |
| Inner area | 214,774 | 221,382 | 232,112 | 233,948 | 237,620 | 239,456 | 241,292 | 248,379 | 250,151 | 259,369 | 262,411 | 271,537 | 274,579 |
| | | | | | | | | | | | | | |
| Chelmsford | 83,028 | 85,462 | 87,939 | <i>88,435</i> | <i>89,427</i> | <i>89,924</i> | 90,420 | <i>92,647</i> | 93,204 | 96,396 | <i>97,575</i> | <i>101,111</i> | 102,290 |
| Colchester | 78,263 | 81,454 | 82,722 | <i>83,022</i> | <i>83,622</i> | <i>83,922</i> | 84,222 | <i>85,721</i> | 86,096 | 88,856 | <i>89,745</i> | <i>92,414</i> | 93,304 |
| Epping Forest | 60,308 | 60,601 | 59,926 | <i>59,830</i> | <i>59,637</i> | <i>59,541</i> | 59,444 | <i>59,175</i> | 59,108 | 58,796 | <i>59,093</i> | <i>59,983</i> | 60,280 |
| Cambridge | 52,646 | 57,980 | 66,584 | <i>68,010</i> | <i>70,863</i> | <i>72,289</i> | 73,715 | <i>78,622</i> | 79,849 | 85,495 | <i>86,582</i> | <i>89,845</i> | 90,932 |
| South Cambs | 71,039 | 74,796 | 82,882 | <i>84,308</i> | <i>87,160</i> | <i>88,586</i> | 90,012 | <i>95,533</i> | 96,913 | 104,051 | <i>105,942</i> | <i>111,617</i> | 113,509 |
| St Edmundsbury | 51,894 | 52,306 | 53,238 | <i>53,462</i> | <i>53,909</i> | <i>54,132</i> | 54,355 | <i>55,485</i> | 55,767 | 57,551 | <i>58,189</i> | <i>60,105</i> | 60,743 |
| Outer area | 397,179 | 412,599 | 433,292 | 437,067 | 444,618 | 448,393 | 452,168 | 467,184 | 470,938 | 491,145 | 497,127 | 515,075 | 521,058 |
| Assessment area | 611,952 | 633,981 | 665,404 | 671,015 | 682,238 | 687,849 | 693,460 | 715,563 | 721,089 | 750,514 | 759,539 | 786,612 | 795,637 |

An additional 10% in dwellings from 2016

| Table B1: Total population | | | <i>Interpolations in italics</i> | | | | | | | | | | |
|----------------------------|------------------|------------------|----------------------------------|-------------------------|-------------------------|-------------------------|-------------------------|-------------------------|-------------------------|-------------------------|-------------------------|-------------------------|-------------------------|
| | 2001 | 2006 | 2011 | 2012 | 2014 | 2015 | 2016 | 2020 | 2021 | 2026 | 2027 | 2030 | 2031 |
| Uttlesford | 68,969 | 71,445 | 74,924 | <i>75,590</i> | <i>76,922</i> | <i>77,588</i> | <i>78,254</i> | <i>81,488</i> | <i>82,297</i> | <i>86,782</i> | <i>87,865</i> | <i>91,115</i> | <i>92,198</i> |
| East Herts | 129,145 | 131,766 | 136,819 | <i>137,798</i> | <i>139,755</i> | <i>140,734</i> | <i>141,713</i> | <i>146,607</i> | <i>147,831</i> | <i>155,147</i> | <i>156,766</i> | <i>161,622</i> | <i>163,241</i> |
| Braintree | 132,482 | 136,993 | 136,640 | <i>136,592</i> | <i>136,494</i> | <i>136,446</i> | <i>136,397</i> | <i>136,746</i> | <i>136,833</i> | <i>138,426</i> | <i>138,939</i> | <i>140,477</i> | <i>140,990</i> |
| Harlow | 78,799 | 78,189 | 87,132 | <i>88,911</i> | <i>92,469</i> | <i>94,248</i> | <i>96,027</i> | <i>104,087</i> | <i>106,102</i> | <i>117,030</i> | <i>118,981</i> | <i>124,836</i> | <i>126,787</i> |
| Inner area | 409,395 | 418,393 | 435,515 | <i>438,891</i> | <i>445,641</i> | <i>449,016</i> | <i>452,392</i> | <i>468,928</i> | <i>473,062</i> | <i>497,384</i> | <i>502,551</i> | <i>518,050</i> | <i>523,216</i> |
| Chelmsford | 157,269 | 159,920 | 164,372 | <i>165,418</i> | <i>167,511</i> | <i>168,557</i> | <i>169,603</i> | <i>175,108</i> | <i>176,484</i> | <i>184,695</i> | <i>186,510</i> | <i>191,957</i> | <i>193,772</i> |
| Colchester | 156,016 | 160,503 | 163,550 | <i>164,299</i> | <i>165,798</i> | <i>166,547</i> | <i>167,297</i> | <i>171,709</i> | <i>172,812</i> | <i>180,623</i> | <i>182,094</i> | <i>186,509</i> | <i>187,981</i> |
| Epping Forest | 120,972 | 120,315 | 118,812 | <i>118,603</i> | <i>118,185</i> | <i>117,977</i> | <i>117,768</i> | <i>117,370</i> | <i>117,270</i> | <i>117,733</i> | <i>117,984</i> | <i>118,736</i> | <i>118,987</i> |
| Cambridge | 109,941 | 115,943 | 128,892 | <i>131,243</i> | <i>135,945</i> | <i>138,297</i> | <i>140,648</i> | <i>150,353</i> | <i>152,780</i> | <i>164,540</i> | <i>166,101</i> | <i>170,786</i> | <i>172,347</i> |
| South Cambs | 130,476 | 135,727 | 149,007 | <i>151,548</i> | <i>156,628</i> | <i>159,168</i> | <i>161,709</i> | <i>173,071</i> | <i>175,912</i> | <i>191,143</i> | <i>194,238</i> | <i>203,525</i> | <i>206,621</i> |
| St Edmundsbury | 98,323 | 99,478 | 102,050 | <i>102,635</i> | <i>103,806</i> | <i>104,391</i> | <i>104,976</i> | <i>108,042</i> | <i>108,808</i> | <i>113,885</i> | <i>114,869</i> | <i>117,820</i> | <i>118,804</i> |
| Outer area | 772,997 | 791,885 | 826,683 | <i>833,747</i> | <i>847,873</i> | <i>854,937</i> | <i>862,000</i> | <i>895,652</i> | <i>904,065</i> | <i>952,618</i> | <i>961,797</i> | <i>989,334</i> | <i>998,513</i> |
| Assessment area | 1,182,392 | 1,210,278 | 1,262,198 | <i>1,272,637</i> | <i>1,293,515</i> | <i>1,303,953</i> | <i>1,314,392</i> | <i>1,364,581</i> | <i>1,377,128</i> | <i>1,450,003</i> | <i>1,464,348</i> | <i>1,507,384</i> | <i>1,521,729</i> |

| Table B2: Total workforce | | | | | | | | | | | | | |
|----------------------------------|----------------------------------|----------------|----------------|----------------|----------------|----------------|----------------|----------------|----------------|----------------|----------------|----------------|----------------|
| | <i>Interpolations in italics</i> | | | | | | | | | | | | |
| | 2001 | 2006 | 2011 | 2012 | 2014 | 2015 | 2016 | 2020 | 2021 | 2026 | 2027 | 2030 | 2031 |
| Uttlesford | 35,994 | 37,655 | 39,488 | <i>39,813</i> | <i>40,464</i> | <i>40,790</i> | 41,115 | <i>42,733</i> | 43,138 | 45,134 | <i>45,838</i> | <i>47,950</i> | 48,655 |
| East Herts | 69,275 | 70,937 | 73,996 | <i>74,509</i> | <i>75,535</i> | <i>76,048</i> | 76,561 | <i>78,991</i> | 79,598 | 82,794 | <i>83,947</i> | <i>87,406</i> | 88,559 |
| Braintree | 68,603 | 71,175 | 70,403 | <i>70,269</i> | <i>70,002</i> | <i>69,868</i> | 69,734 | <i>69,485</i> | 69,423 | 69,149 | <i>69,489</i> | <i>70,509</i> | 70,849 |
| Harlow | 40,902 | 41,615 | 48,225 | <i>49,357</i> | <i>51,620</i> | <i>52,751</i> | 53,883 | <i>58,618</i> | 59,801 | 65,706 | <i>66,856</i> | <i>70,305</i> | 71,454 |
| Inner area | 214,774 | 221,382 | 232,112 | 233,948 | 237,620 | 239,456 | 241,292 | 249,827 | 251,960 | 262,782 | 266,129 | 276,170 | 279,517 |
| Chelmsford | 83,028 | 85,462 | 87,939 | <i>88,435</i> | <i>89,427</i> | <i>89,924</i> | 90,420 | <i>93,162</i> | 93,847 | 97,594 | <i>98,878</i> | <i>102,729</i> | 104,012 |
| Colchester | 78,263 | 81,454 | 82,722 | <i>83,022</i> | <i>83,622</i> | <i>83,922</i> | 84,222 | <i>86,205</i> | 86,701 | 89,988 | <i>90,975</i> | <i>93,936</i> | 94,923 |
| Epping Forest | 60,308 | 60,601 | 59,926 | <i>59,830</i> | <i>59,637</i> | <i>59,541</i> | 59,444 | <i>59,262</i> | 59,217 | 59,002 | <i>59,316</i> | <i>60,261</i> | 60,576 |
| Cambridge | 52,646 | 57,980 | 66,584 | <i>68,010</i> | <i>70,863</i> | <i>72,289</i> | 73,715 | <i>79,328</i> | 80,732 | 87,148 | <i>87,859</i> | <i>89,993</i> | 90,705 |
| South Cambs | 71,039 | 74,796 | 82,882 | <i>84,308</i> | <i>87,160</i> | <i>88,586</i> | 90,012 | <i>96,426</i> | 98,029 | 106,144 | <i>108,221</i> | <i>114,452</i> | 116,529 |
| St Edmundsbury | 51,894 | 52,306 | 53,238 | <i>53,462</i> | <i>53,909</i> | <i>54,132</i> | 54,355 | <i>55,795</i> | 56,155 | 58,282 | <i>58,984</i> | <i>61,091</i> | 61,794 |
| Outer area | 397,179 | 412,599 | 433,292 | 437,067 | 444,618 | 448,393 | 452,168 | 470,178 | 474,681 | 498,157 | 504,233 | 522,462 | 528,538 |
| Assessment area | 611,952 | 633,981 | 665,404 | 671,015 | 682,238 | 687,849 | 693,460 | 720,005 | 726,641 | 760,939 | 770,362 | 798,632 | 808,055 |

An additional 10% in dwellings from 2021

| Table B3: Total population | | | | | | | | | | | | | |
|-----------------------------------|------------------|----------------------------------|------------------|-------------------------|-------------------------|-------------------------|------------------|-------------------------|------------------|------------------|-------------------------|-------------------------|------------------|
| | | <i>Interpolations in italics</i> | | | | | | | | | | | |
| | 2001 | 2006 | 2011 | 2012 | 2014 | 2015 | 2016 | 2020 | 2021 | 2026 | 2027 | 2030 | 2031 |
| Uttlesford | 68,969 | 71,445 | 74,924 | <i>75,590</i> | <i>76,922</i> | <i>77,588</i> | 78,254 | <i>81,052</i> | 81,751 | 86,259 | <i>87,344</i> | <i>90,601</i> | 91,687 |
| East Herts | 129,145 | 131,766 | 136,819 | <i>137,798</i> | <i>139,755</i> | <i>140,734</i> | 141,713 | <i>145,945</i> | 147,003 | 154,338 | <i>155,959</i> | <i>160,820</i> | 162,441 |
| Braintree | 132,482 | 136,993 | 136,640 | <i>136,592</i> | <i>136,494</i> | <i>136,446</i> | 136,397 | <i>136,481</i> | 136,502 | 138,096 | <i>138,609</i> | <i>140,149</i> | 140,662 |
| Harlow | 78,799 | 78,189 | 87,132 | <i>88,911</i> | <i>92,469</i> | <i>94,248</i> | 96,027 | <i>103,190</i> | 104,981 | 115,931 | <i>117,886</i> | <i>123,750</i> | 125,705 |
| Inner area | 409,395 | 418,393 | 435,515 | <i>438,891</i> | <i>445,641</i> | <i>449,016</i> | 452,392 | <i>466,668</i> | 470,236 | 494,623 | <i>499,797</i> | <i>515,321</i> | 520,495 |
| Chelmsford | 157,269 | 159,920 | 164,372 | <i>165,418</i> | <i>167,511</i> | <i>168,557</i> | 169,603 | <i>174,323</i> | 175,503 | 183,754 | <i>185,572</i> | <i>191,023</i> | 192,840 |
| Colchester | 156,016 | 160,503 | 163,550 | <i>164,299</i> | <i>165,798</i> | <i>166,547</i> | 167,297 | <i>170,893</i> | 171,792 | 179,667 | <i>181,146</i> | <i>185,583</i> | 187,062 |
| Epping Forest | 120,972 | 120,315 | 118,812 | <i>118,603</i> | <i>118,185</i> | <i>117,977</i> | 117,768 | <i>117,231</i> | 117,097 | 117,562 | <i>117,813</i> | <i>118,567</i> | 118,818 |
| Cambridge | 109,941 | 115,943 | 128,892 | <i>131,243</i> | <i>135,945</i> | <i>138,297</i> | 140,648 | <i>149,262</i> | 151,416 | 163,281 | <i>165,120</i> | <i>170,634</i> | 172,473 |
| South Cambs | 130,476 | 135,727 | 149,007 | <i>151,548</i> | <i>156,628</i> | <i>159,168</i> | 161,709 | <i>171,698</i> | 174,195 | 189,497 | <i>192,602</i> | <i>201,916</i> | 205,021 |
| St Edmundsbury | 98,323 | 99,478 | 102,050 | <i>102,635</i> | <i>103,806</i> | <i>104,391</i> | 104,976 | <i>107,543</i> | 108,184 | 113,283 | <i>114,270</i> | <i>117,234</i> | 118,221 |
| Outer area | 772,997 | 791,885 | 826,683 | <i>833,747</i> | <i>847,873</i> | <i>854,937</i> | 862,000 | <i>890,950</i> | 898,188 | 947,045 | <i>956,523</i> | <i>984,958</i> | 994,436 |
| Assessment area | 1,182,392 | 1,210,278 | 1,262,198 | <i>1,272,637</i> | <i>1,293,515</i> | <i>1,303,953</i> | 1,314,392 | <i>1,357,618</i> | 1,368,424 | 1,441,668 | <i>1,456,320</i> | <i>1,500,278</i> | 1,514,931 |

| Table B4: Total workforce | | | | | | | | | | | | | |
|----------------------------------|----------------|----------------------------------|----------------|----------------|----------------|----------------|----------------|----------------|----------------|----------------|----------------|----------------|----------------|
| | | <i>Interpolations in italics</i> | | | | | | | | | | | |
| | 2001 | 2006 | 2011 | 2012 | 2014 | 2015 | 2016 | 2020 | 2021 | 2026 | 2027 | 2030 | 2031 |
| Uttlesford | 35,994 | 37,655 | 39,488 | <i>39,813</i> | <i>40,464</i> | <i>40,790</i> | 41,115 | <i>42,467</i> | 42,805 | 44,838 | <i>45,544</i> | <i>47,660</i> | 48,366 |
| East Herts | 69,275 | 70,937 | 73,996 | <i>74,509</i> | <i>75,535</i> | <i>76,048</i> | 76,561 | <i>78,560</i> | 79,060 | 82,316 | <i>83,472</i> | <i>86,940</i> | 88,096 |
| Braintree | 68,603 | 71,175 | 70,403 | <i>70,269</i> | <i>70,002</i> | <i>69,868</i> | 69,734 | <i>69,327</i> | 69,225 | 68,965 | <i>69,306</i> | <i>70,328</i> | 70,669 |
| Harlow | 40,902 | 41,615 | 48,225 | <i>49,357</i> | <i>51,620</i> | <i>52,751</i> | 53,883 | <i>58,025</i> | 59,061 | 65,045 | <i>66,201</i> | <i>69,669</i> | 70,825 |
| Inner area | 214,774 | 221,382 | 232,112 | 233,948 | 237,620 | 239,456 | 241,292 | 248,379 | 250,151 | 261,164 | 264,522 | 274,597 | 277,956 |
| Chelmsford | 83,028 | 85,462 | 87,939 | <i>88,435</i> | <i>89,427</i> | <i>89,924</i> | 90,420 | <i>92,647</i> | 93,204 | 97,034 | <i>98,322</i> | <i>102,186</i> | 103,474 |
| Colchester | 78,263 | 81,454 | 82,722 | <i>83,022</i> | <i>83,622</i> | <i>83,922</i> | 84,222 | <i>85,721</i> | 86,096 | 89,454 | <i>90,447</i> | <i>93,425</i> | 94,418 |
| Epping Forest | 60,308 | 60,601 | 59,926 | <i>59,830</i> | <i>59,637</i> | <i>59,541</i> | 59,444 | <i>59,175</i> | 59,108 | 58,904 | <i>59,220</i> | <i>60,167</i> | 60,482 |
| Cambridge | 52,646 | 57,980 | 66,584 | <i>68,010</i> | <i>70,863</i> | <i>72,289</i> | 73,715 | <i>78,622</i> | 79,849 | 86,368 | <i>87,262</i> | <i>89,944</i> | 90,838 |
| South Cambs | 71,039 | 74,796 | 82,882 | <i>84,308</i> | <i>87,160</i> | <i>88,586</i> | 90,012 | <i>95,533</i> | 96,913 | 105,155 | <i>107,239</i> | <i>113,491</i> | 115,575 |
| St Edmundsbury | 51,894 | 52,306 | 53,238 | <i>53,462</i> | <i>53,909</i> | <i>54,132</i> | 54,355 | <i>55,485</i> | 55,767 | 57,935 | <i>58,640</i> | <i>60,758</i> | 61,464 |
| Outer area | 397,179 | 412,599 | 433,292 | 437,067 | 444,618 | 448,393 | 452,168 | 467,184 | 470,938 | 494,850 | 501,130 | 519,972 | 526,252 |
| Assessment area | 611,952 | 633,981 | 665,404 | 671,015 | 682,238 | 687,849 | 693,460 | 715,563 | 721,089 | 756,014 | 765,653 | 794,569 | 804,208 |

